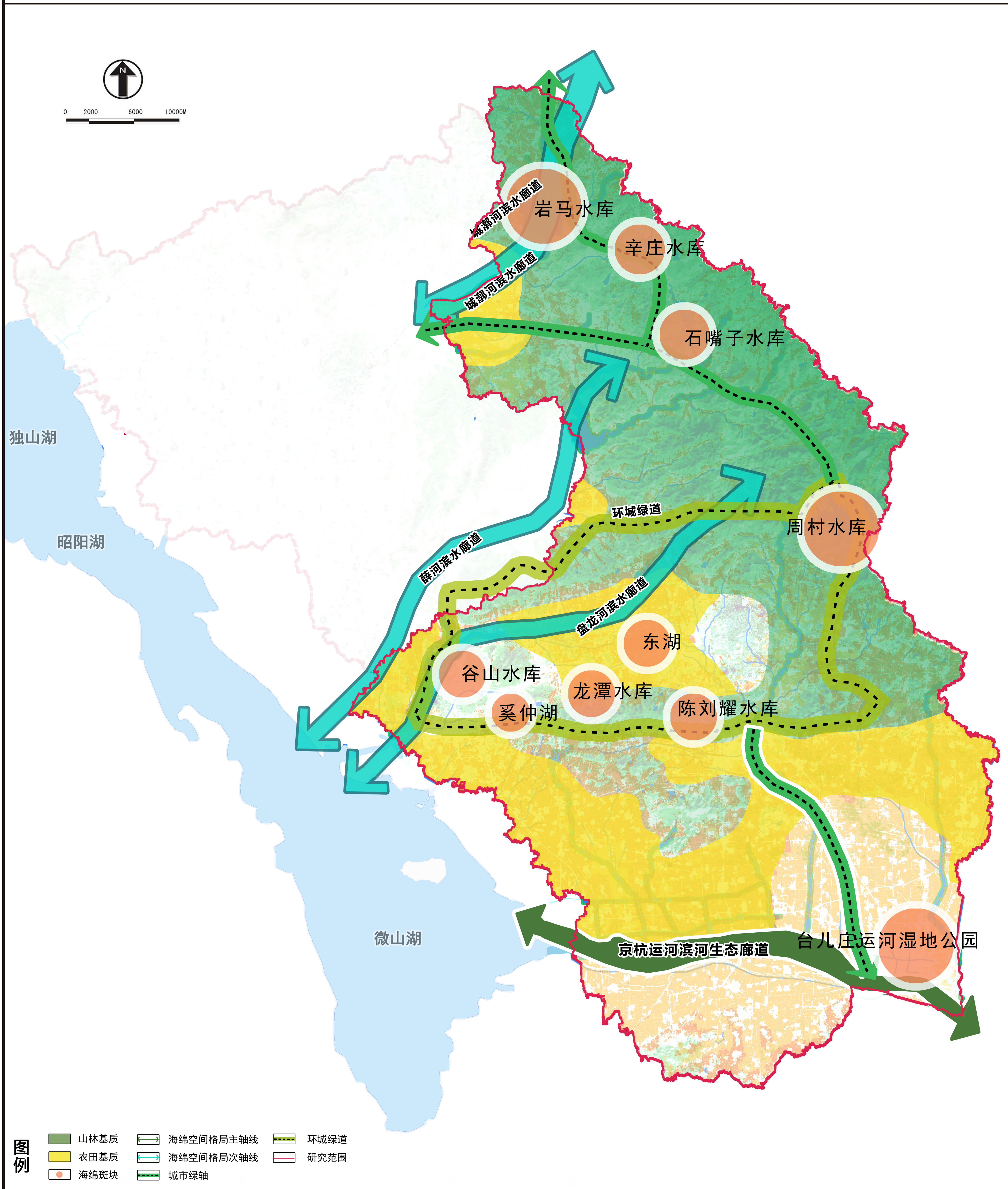


枣庄市海绵城市空间格局图



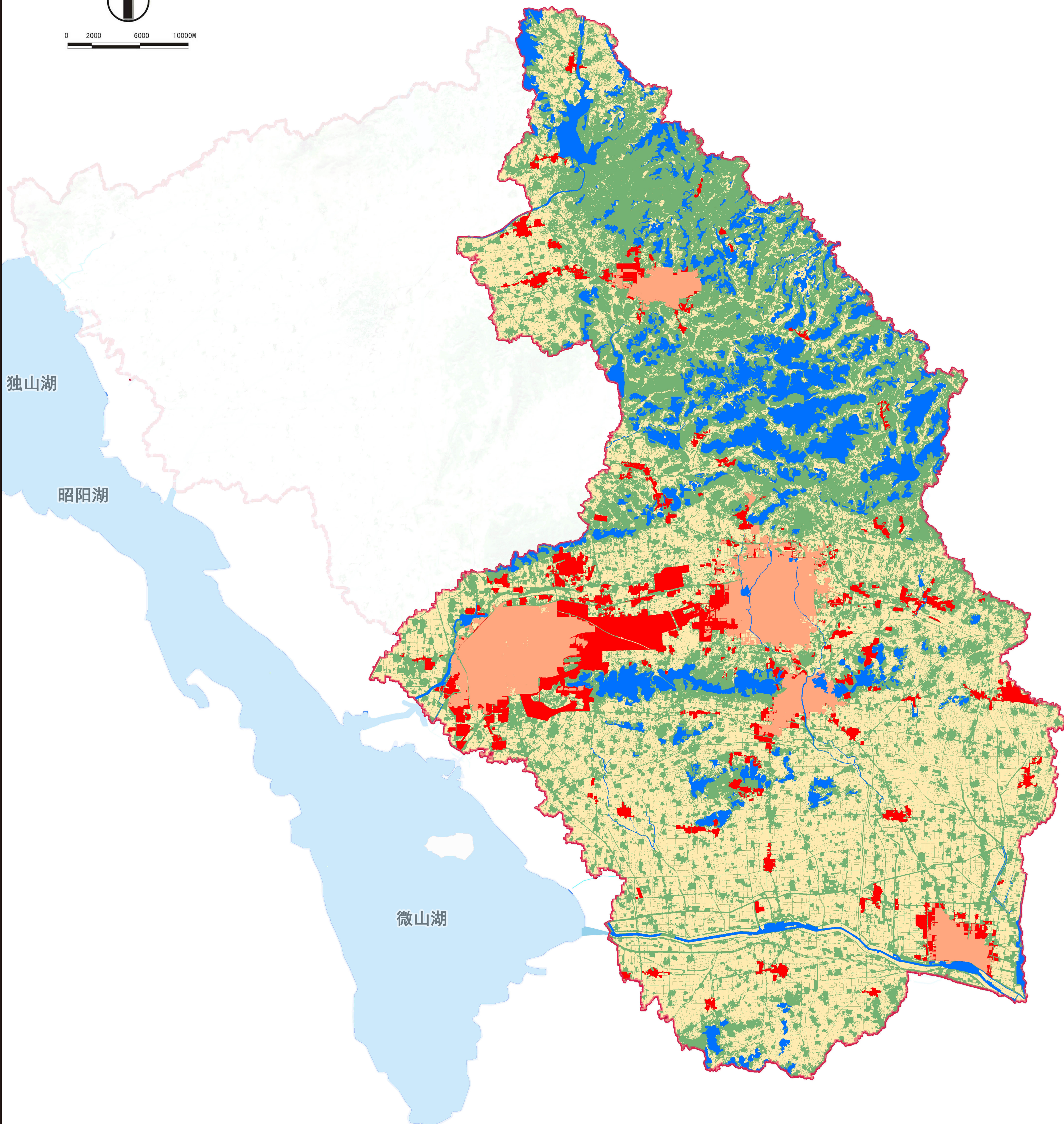
图例

- 山林基质
- 海绵空间格局主轴线
- 环城绿道
- 农田基质
- 海绵空间格局次轴线
- 研究范围
- 海绵斑块
- 城市绿轴

枣庄市海绵城市功能分区图



0 2000 6000 10000M



图例

- | | | | |
|--|---------|--|---------|
| | 海绵生态保育区 | | 海绵生态涵养区 |
| | 海绵建设优化区 | | 海绵生态缓冲区 |
| | 海绵建设发展区 | | 研究范围 |

枣庄市海绵城市管控单元划分图



0 2000 6000 10000M

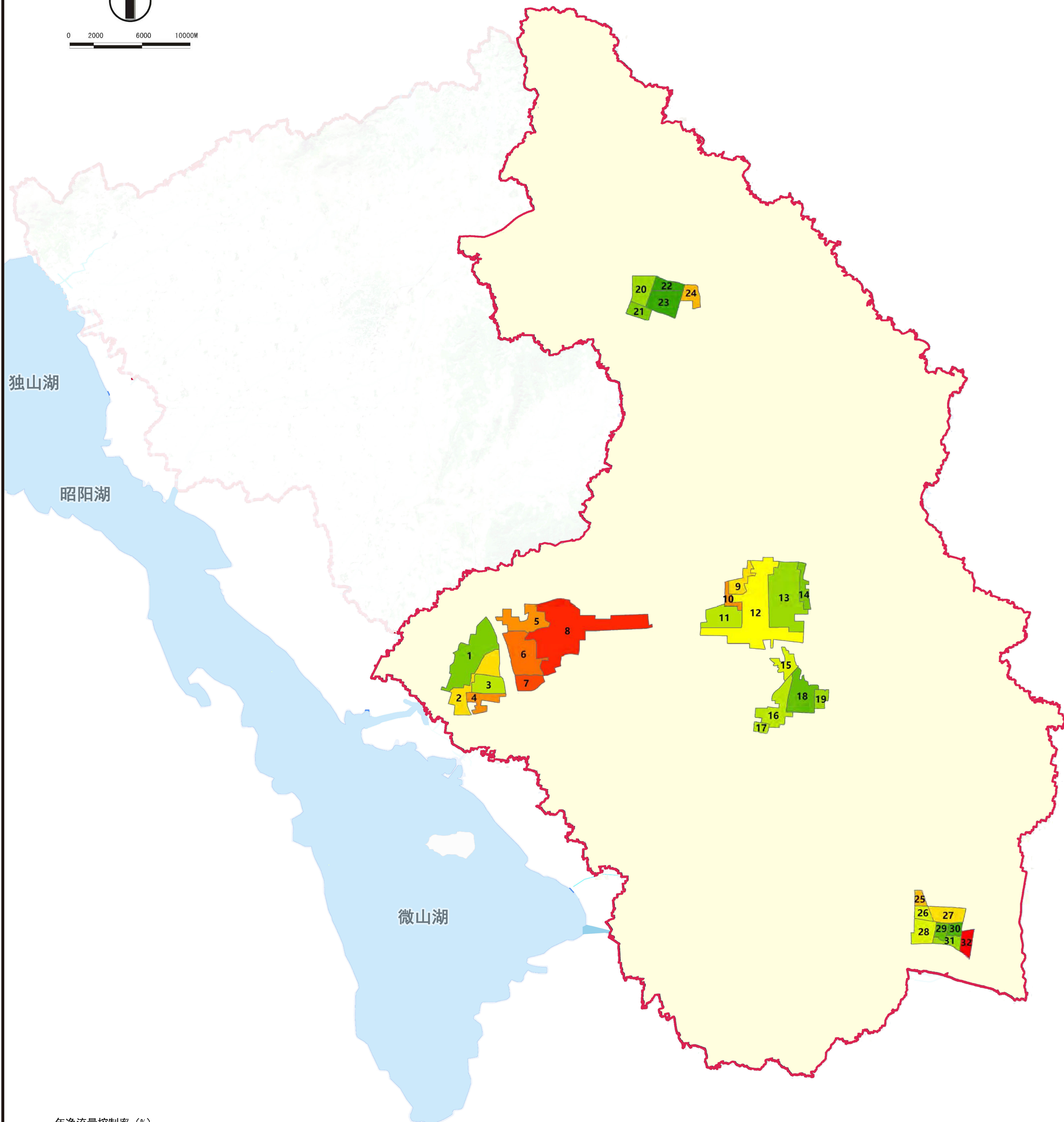


图例
— 管控分区
— 研究范围

枣庄市海绵城市管控指标分解图



0 2000 6000 10000M



图例

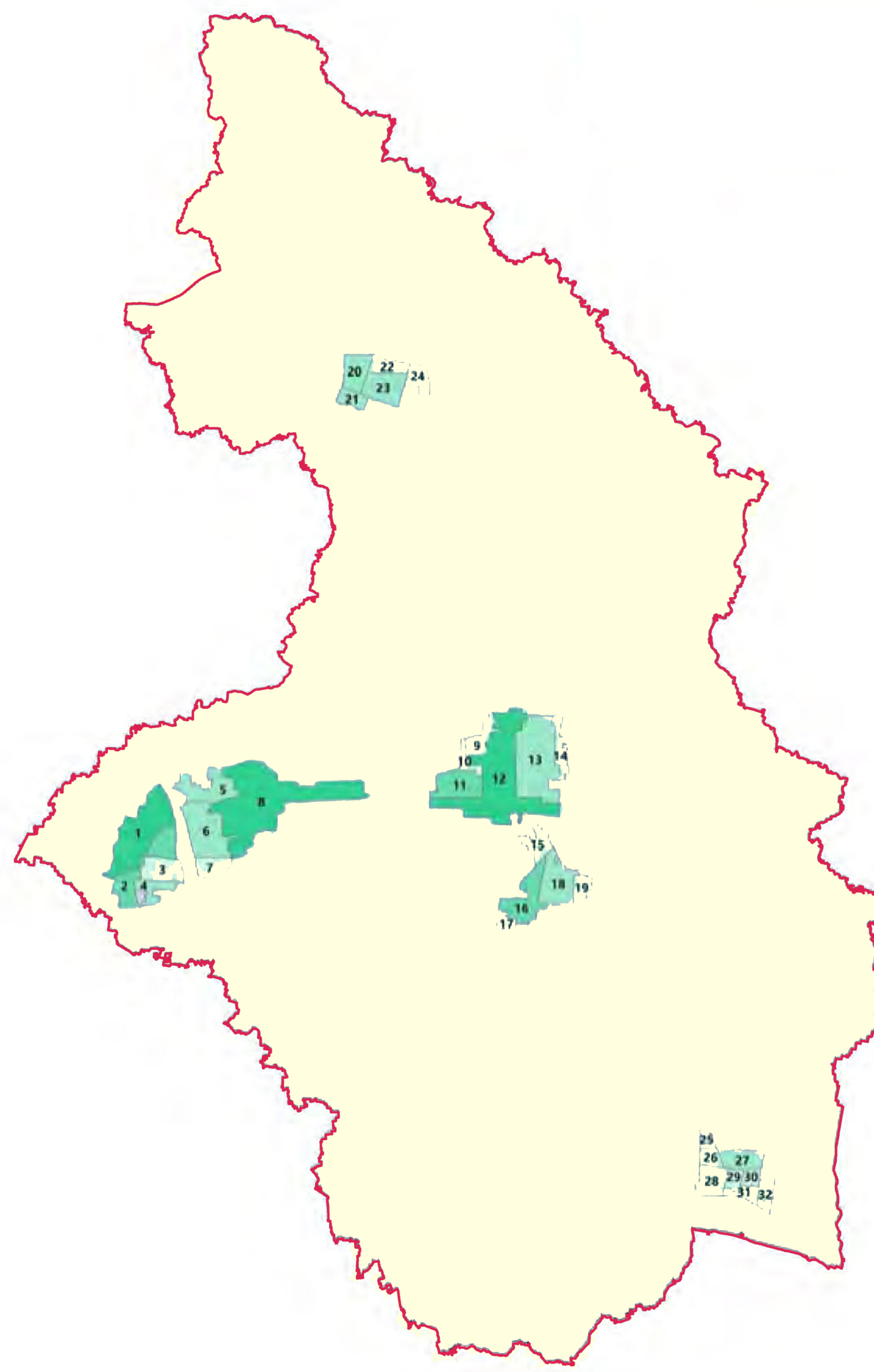
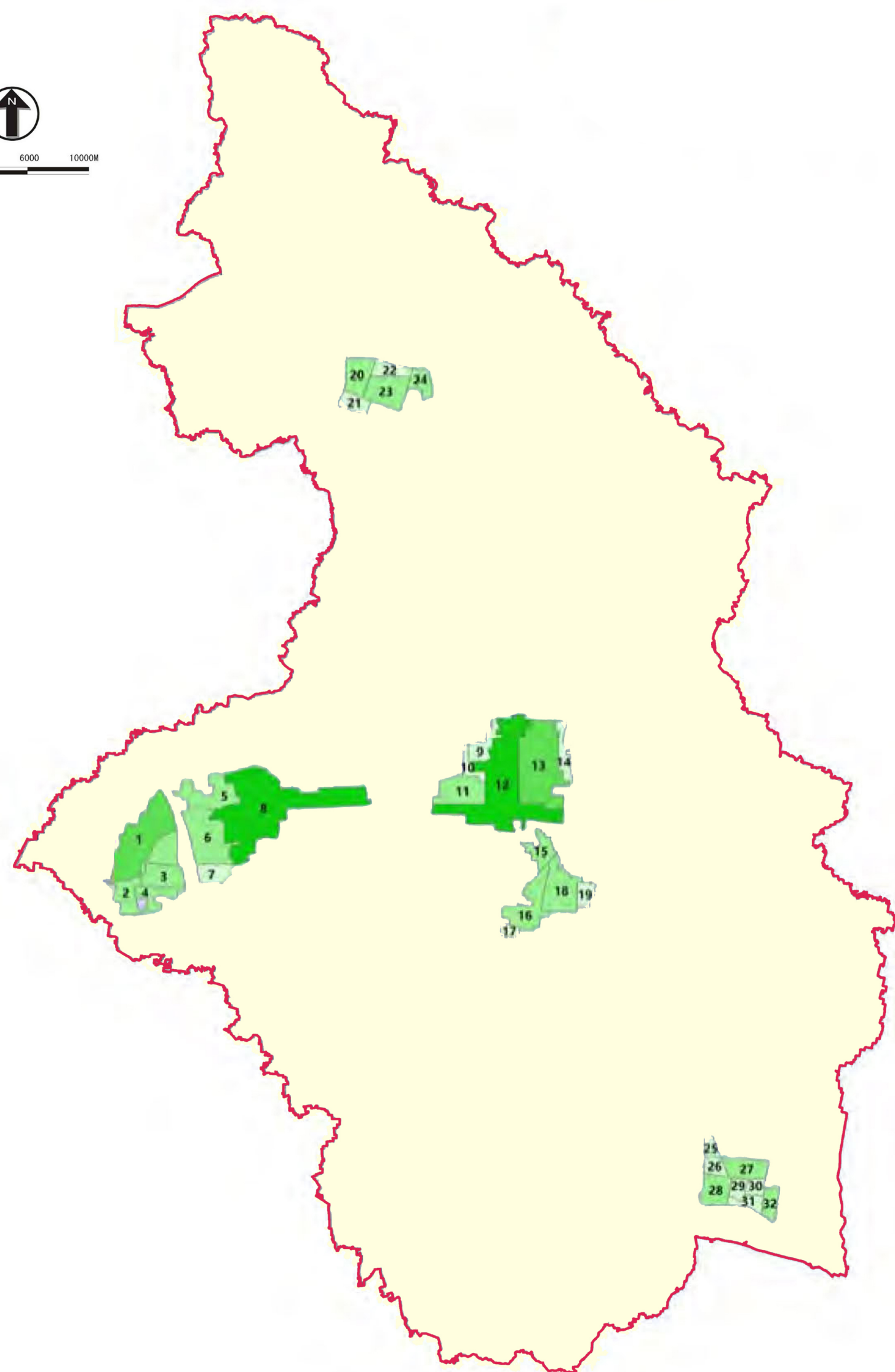
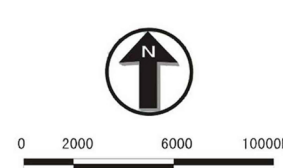
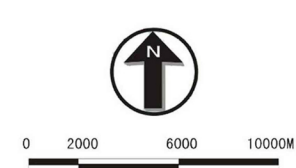
年净流量控制率 (%)



枣庄市海绵设施建设指标分解图

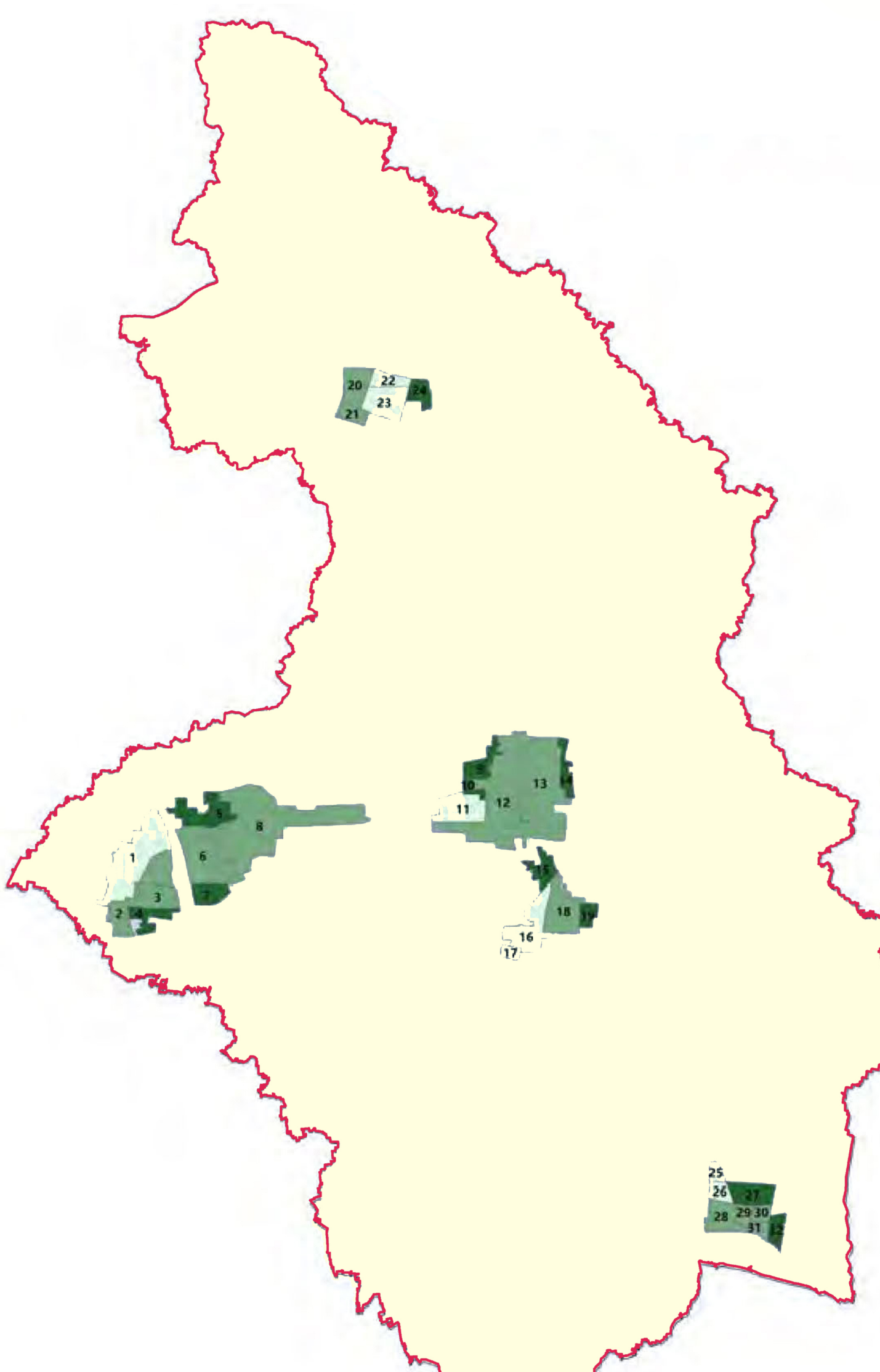
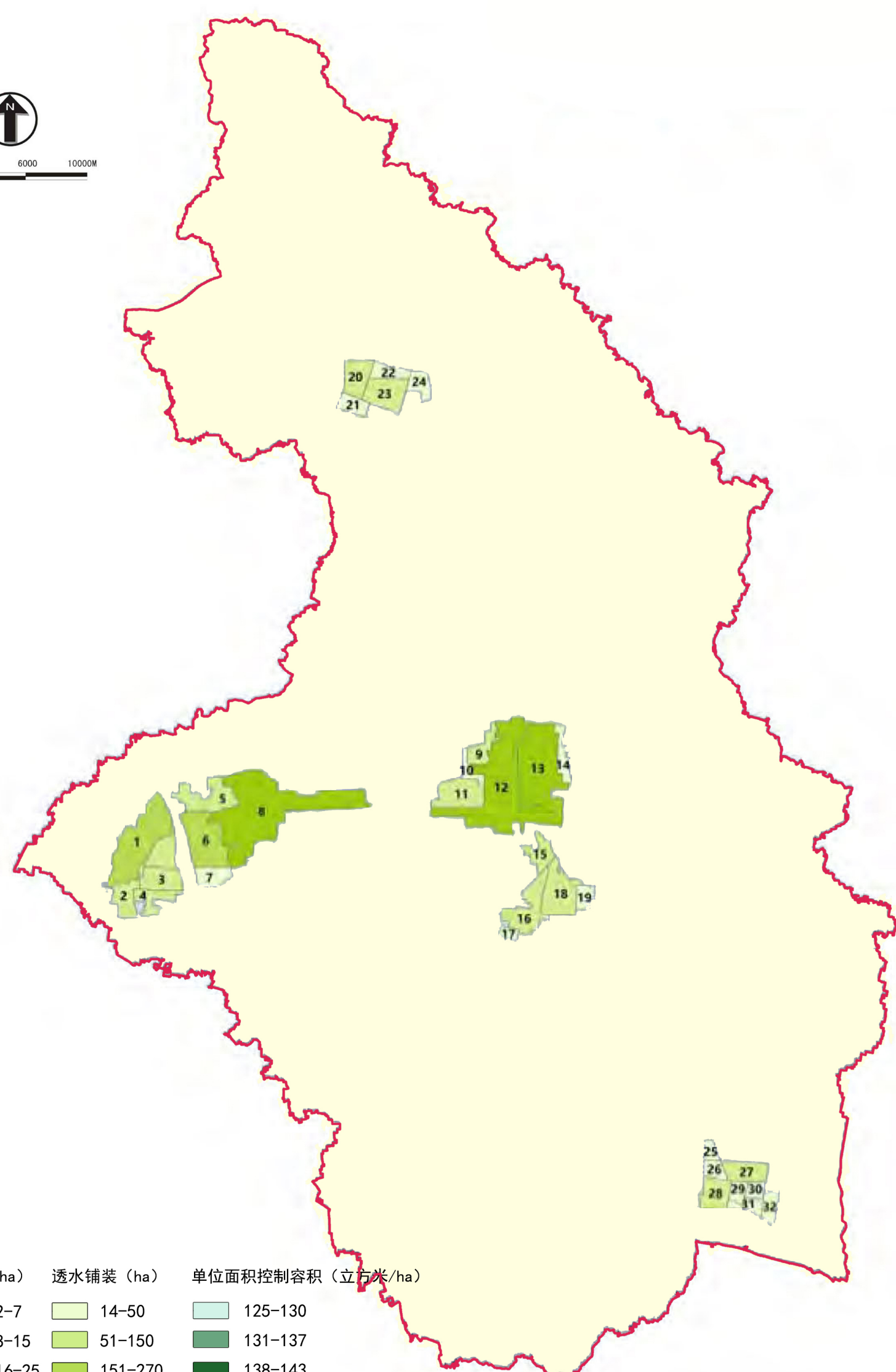
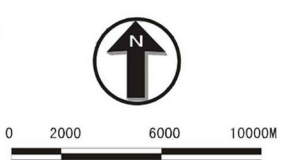
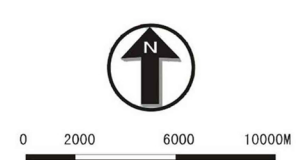
SS削减率

COD削减率



NH3-N削减率

TP削减率

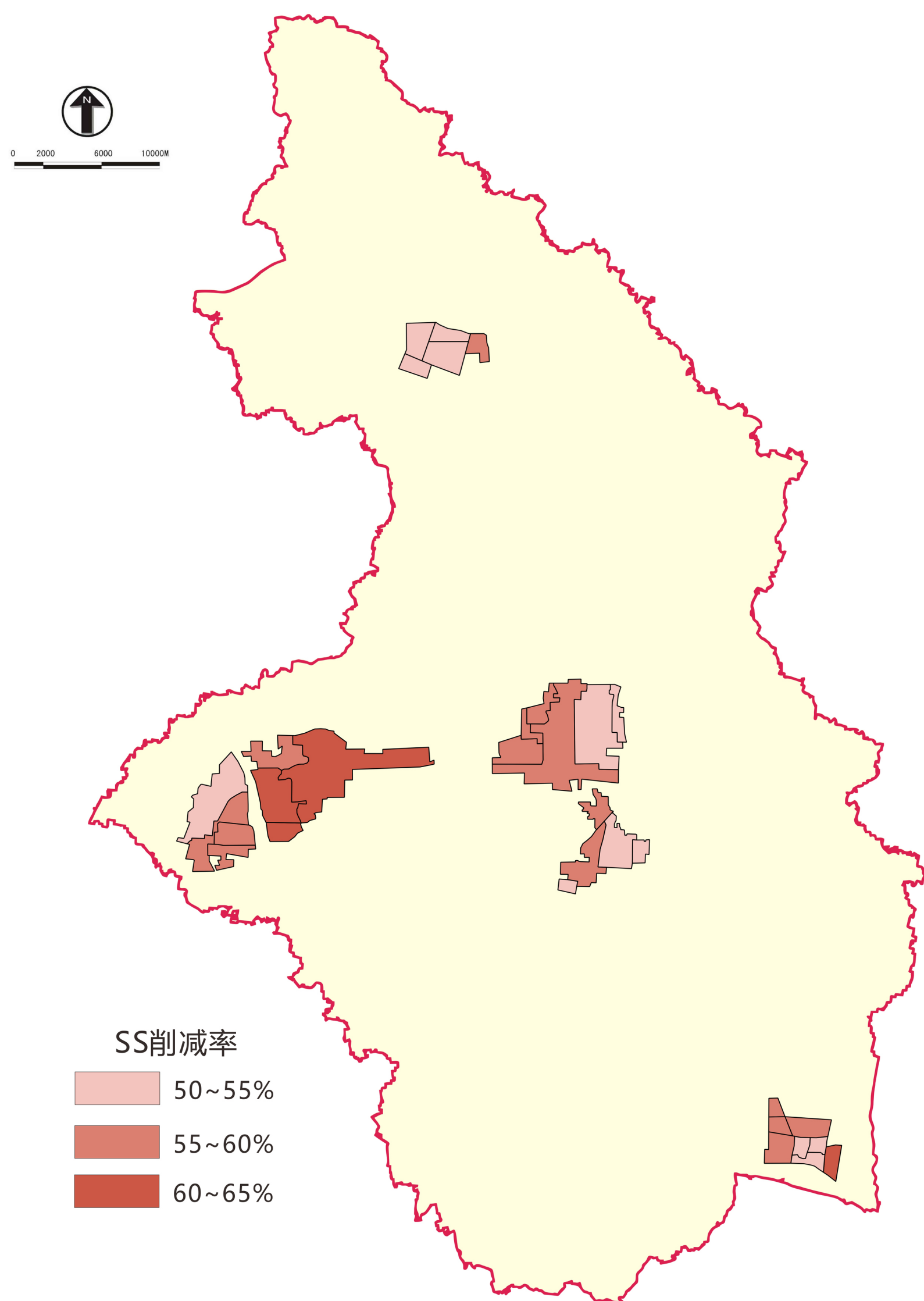


图例

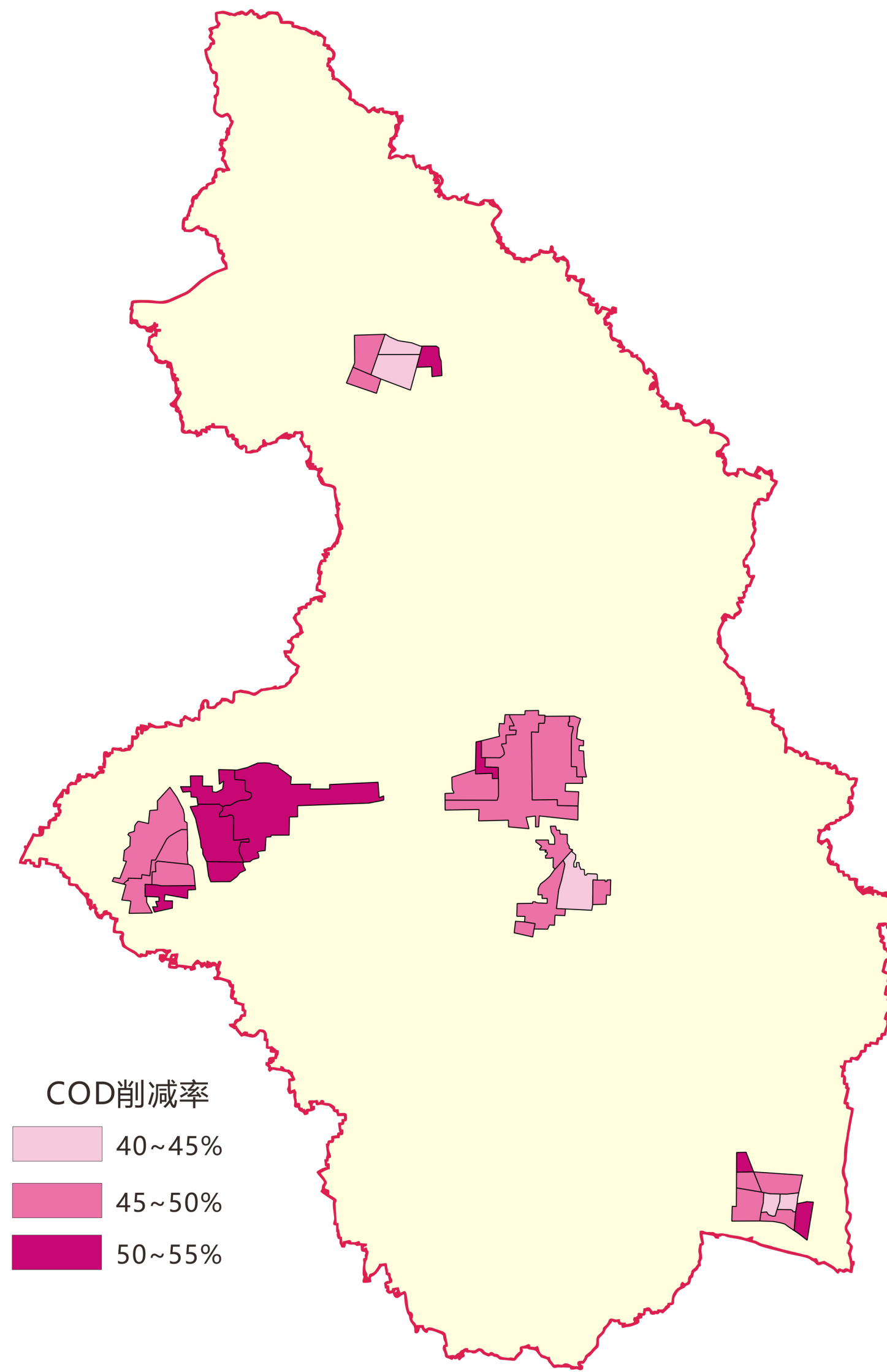
下沉式绿地 (ha)	屋顶绿地 (ha)	透水铺装 (ha)	单位面积控制容积 (立方米/ha)
10-30	2-7	14-50	125-130
31-90	8-15	51-150	131-137
91-135	16-25	151-270	138-143
136-255	26-70	271-410	

枣庄市面源污染消解量指标分解表

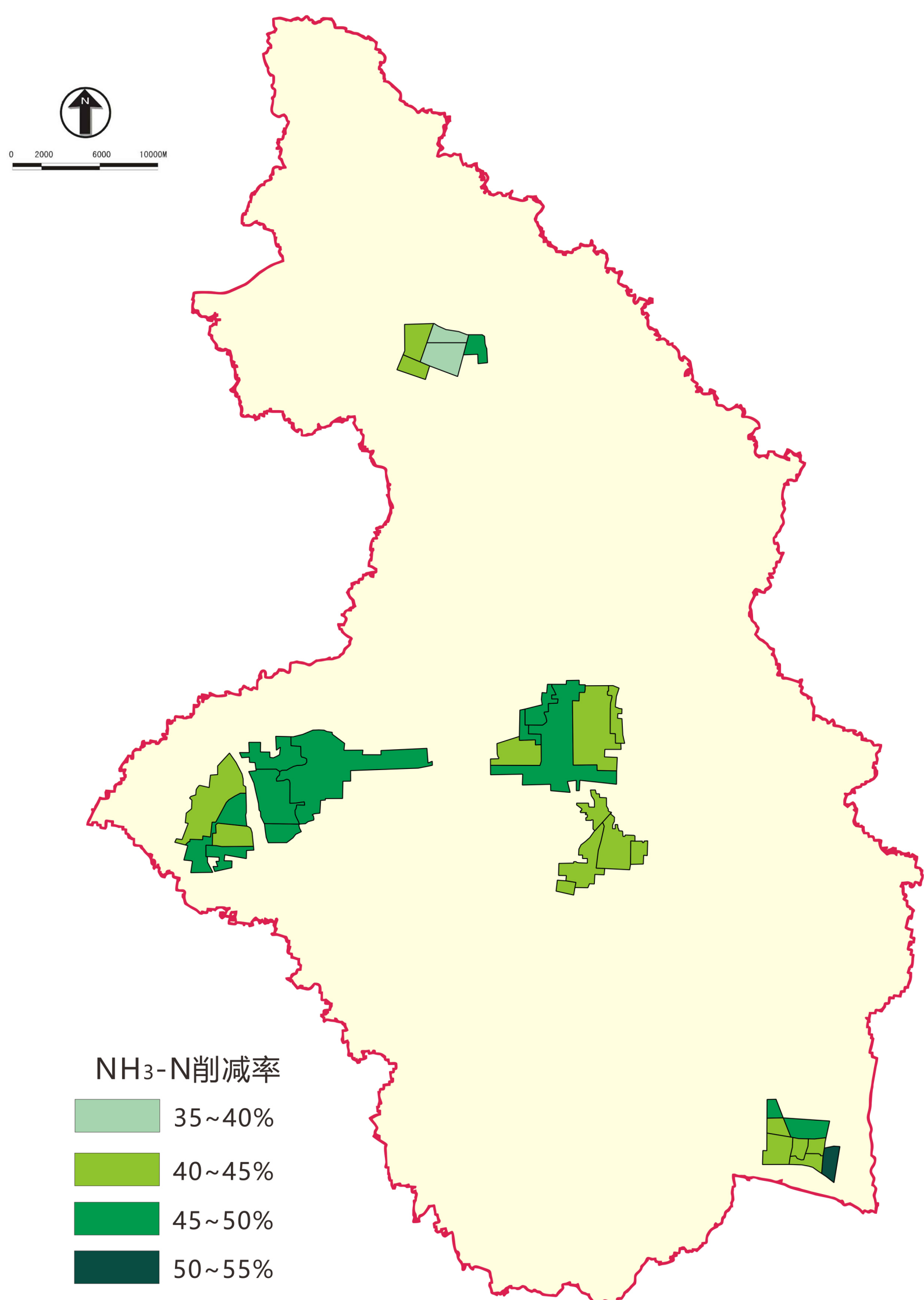
SS削减率



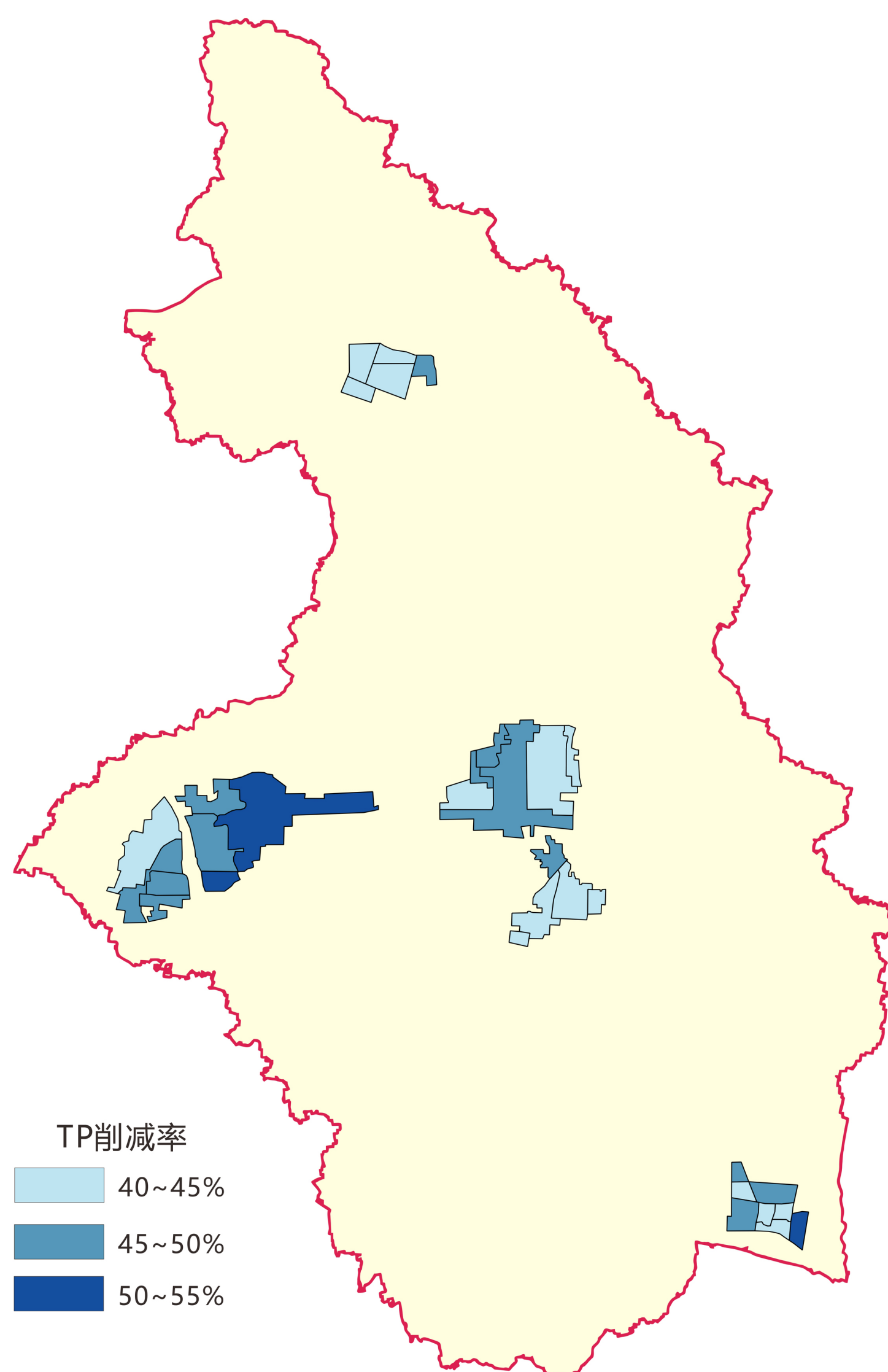
COD削减率



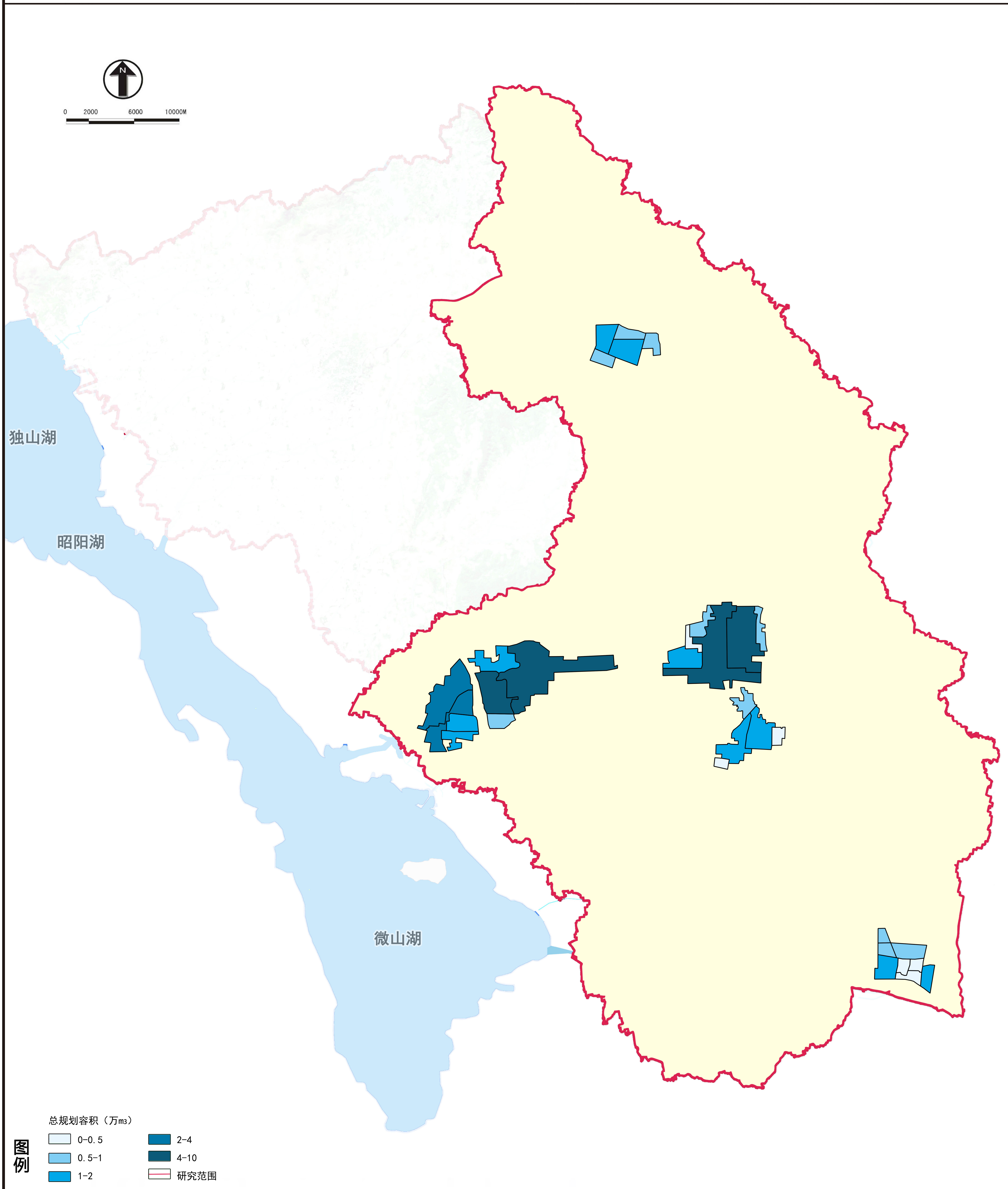
NH₃-N削减率



TP削减率

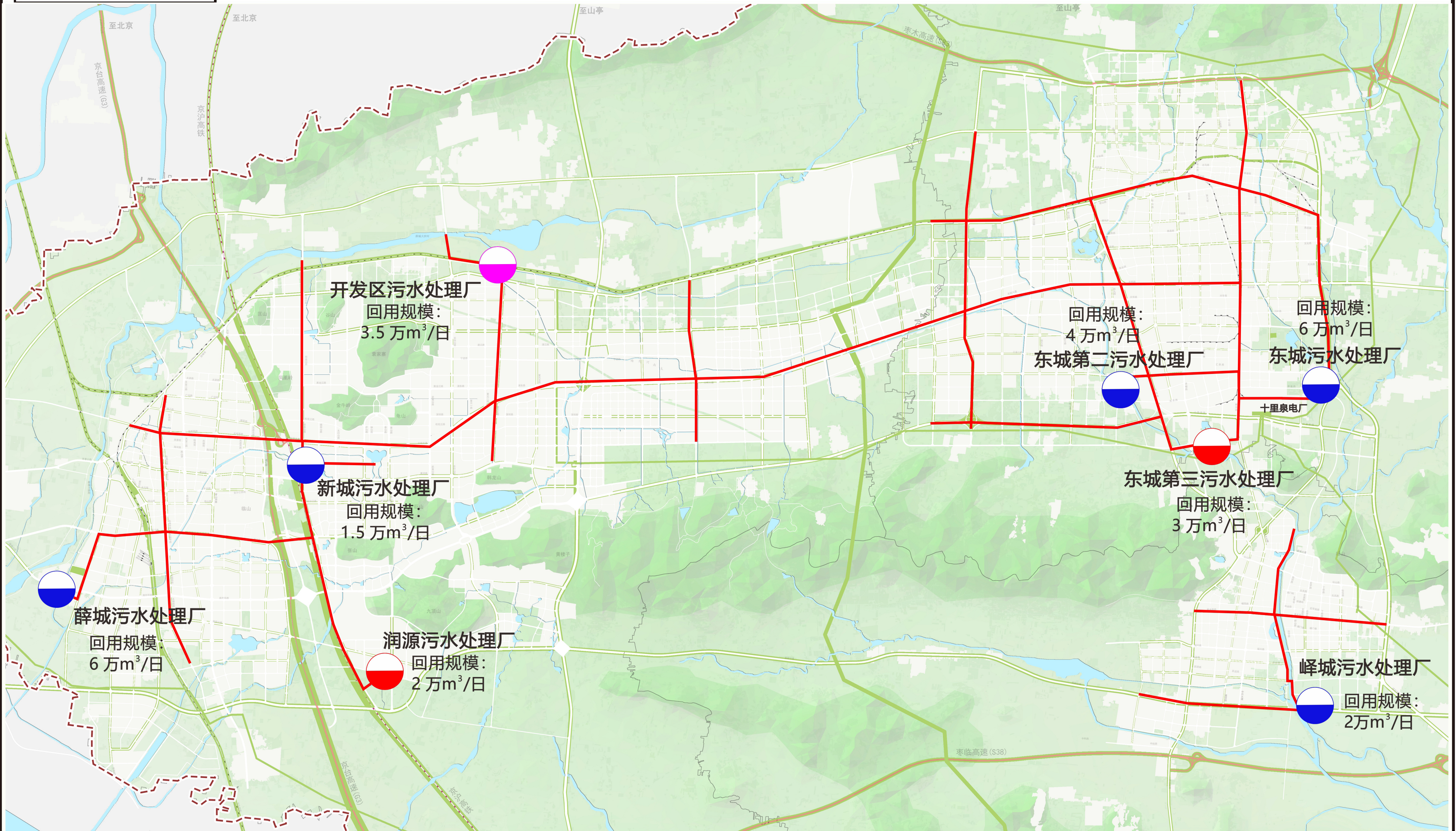


枣庄市海绵城市雨水调蓄利用容积分解图



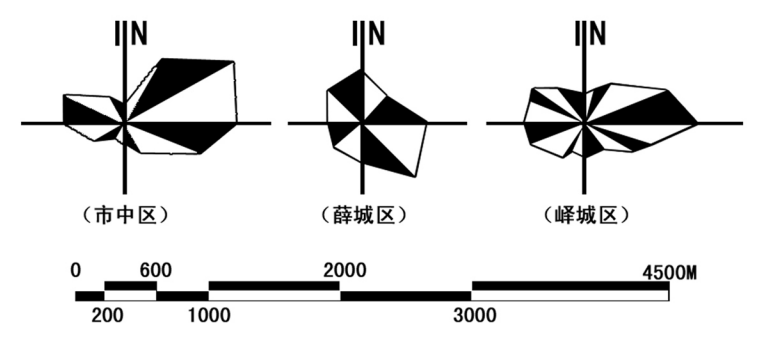
枣庄市再生水工程规划图

中心城区

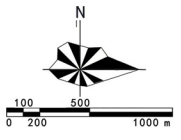


图例

- 现状污水处理厂
- 扩建污水处理厂
- 新建污水处理厂
- 规划再生水管



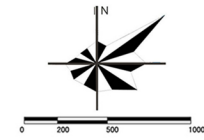
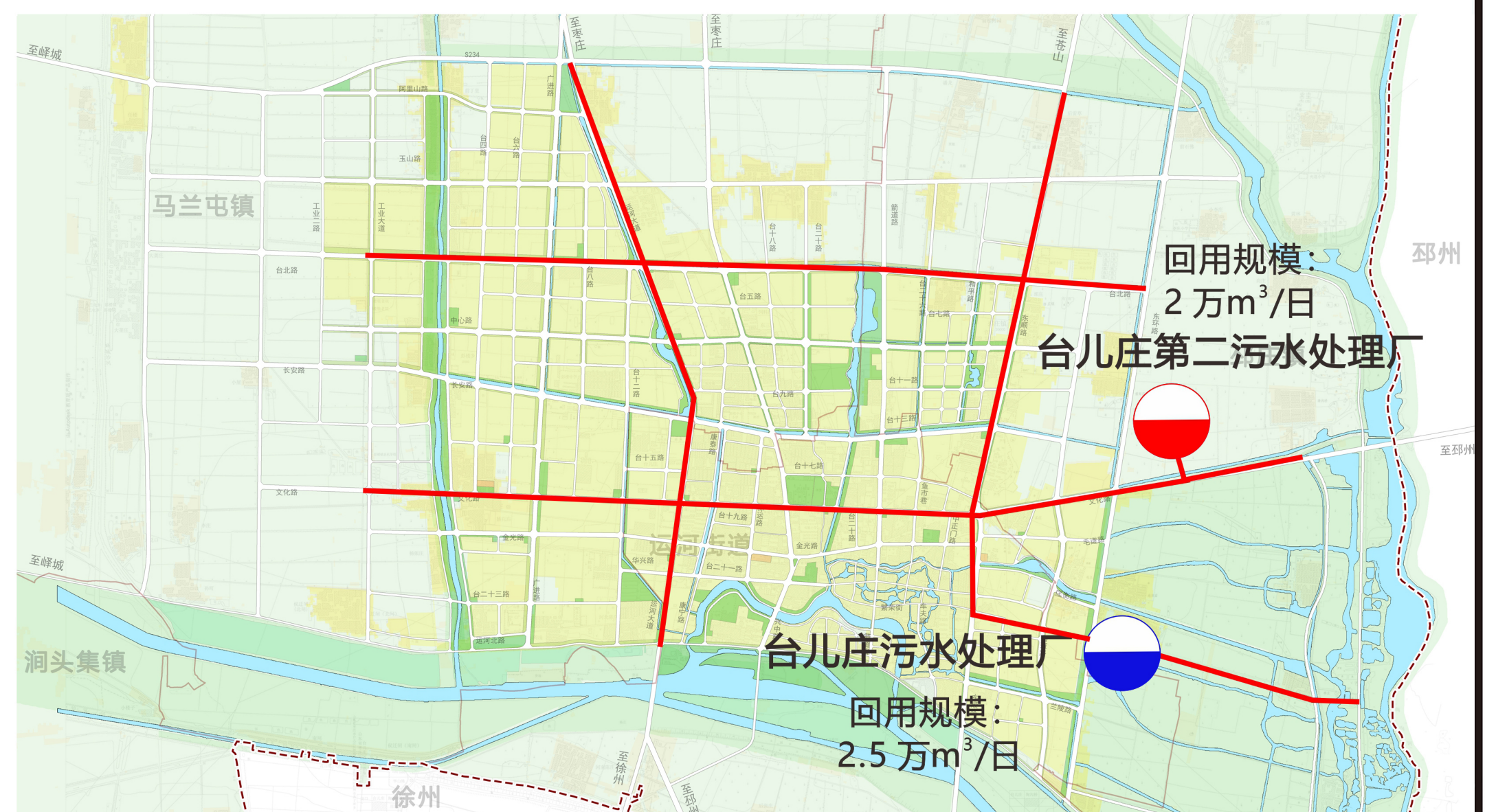
山亭区



图例

- 现状污水处理厂
- 扩建污水处理厂
- 新建污水处理厂
- 规划再生水管

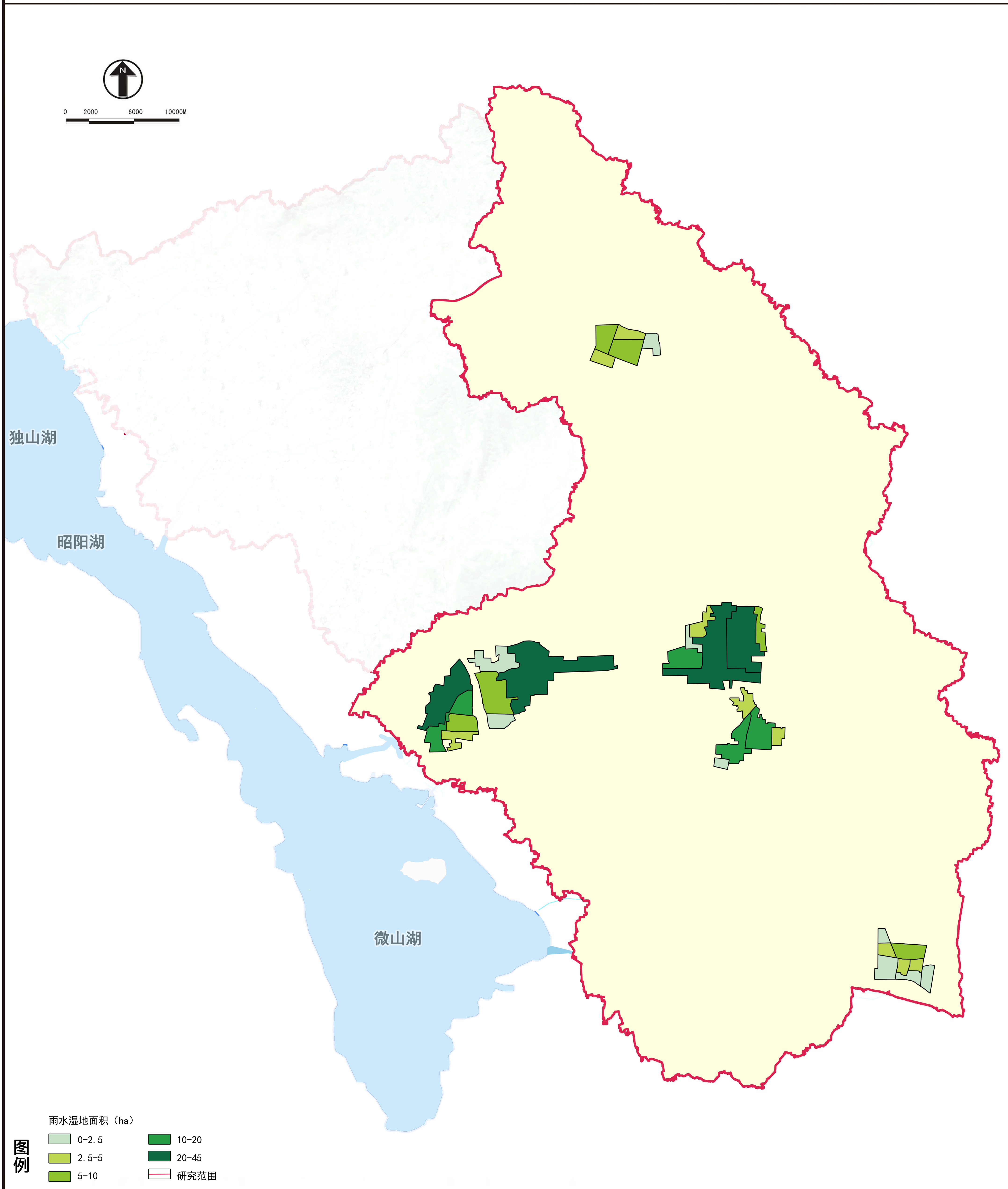
台儿庄区



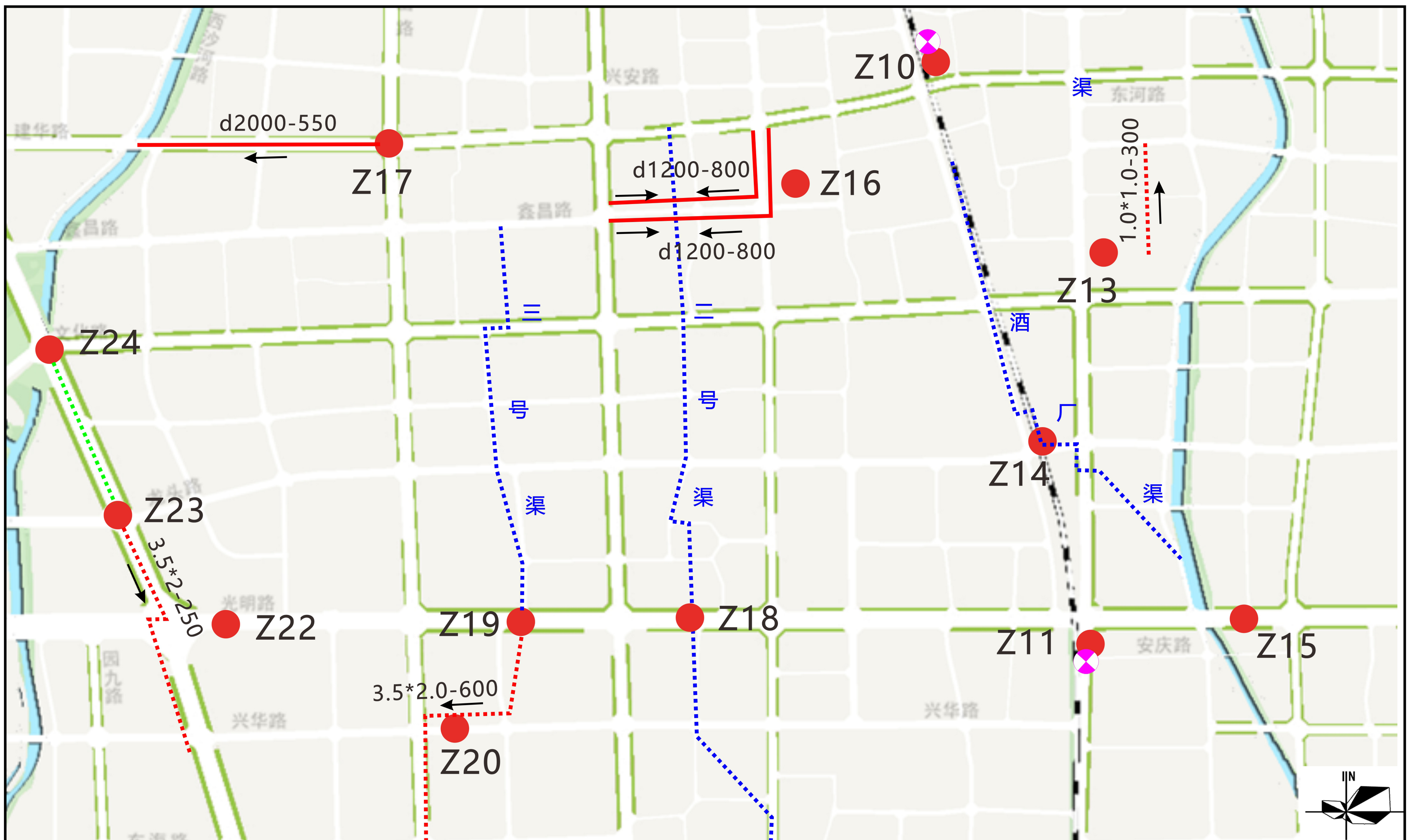
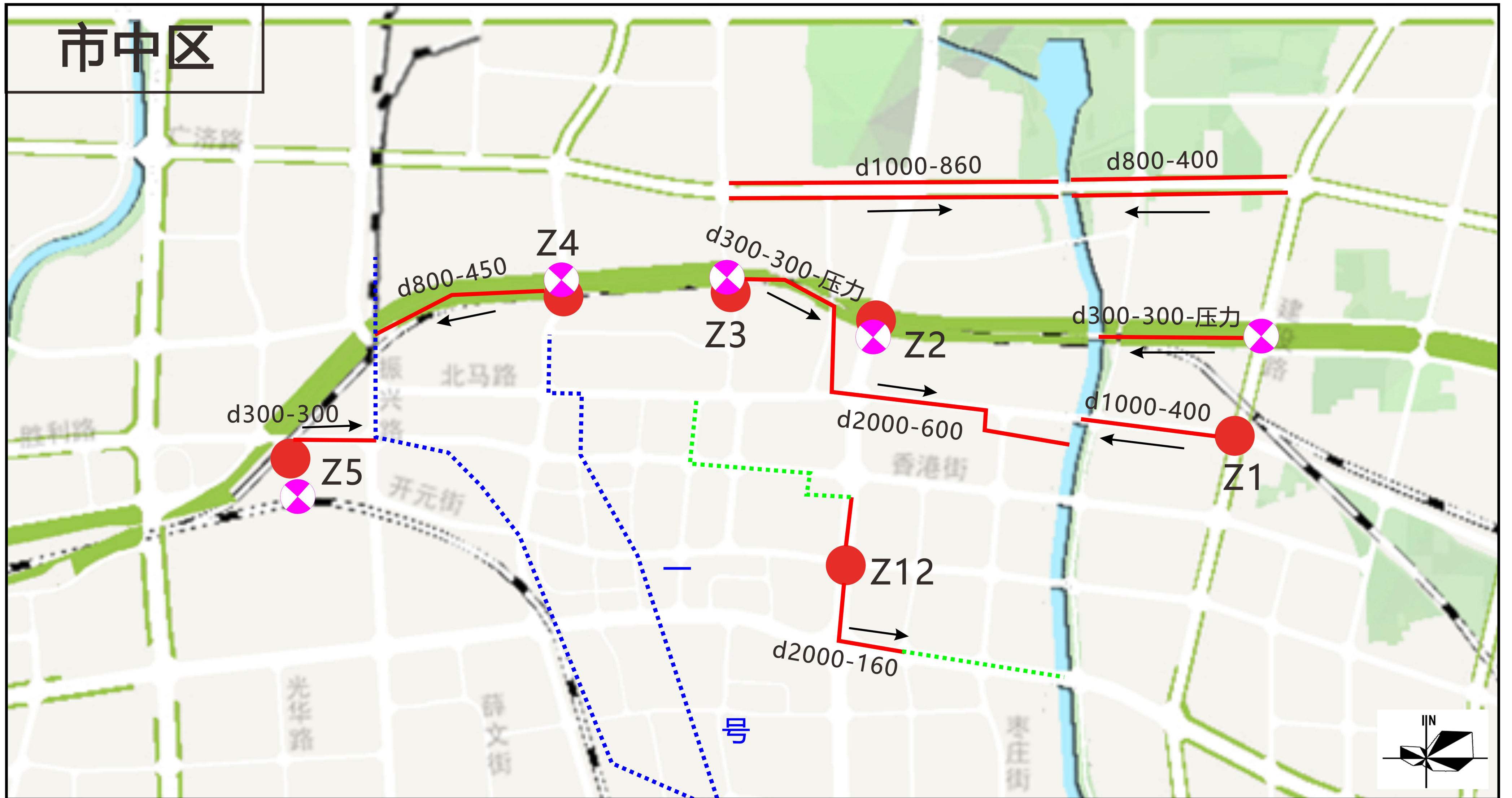
图例

- 现状污水处理厂
- 扩建污水处理厂
- 新建污水处理厂
- 规划再生水管

枣庄市海绵城市雨水湿地建设指标分解图



枣庄市内涝积水点整治规划图



图例

- 现状排水渠
- 排水渠疏通
- 新建过水涵洞
- 新建雨水管道
- 新建排水渠
- 新建泵站